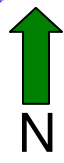
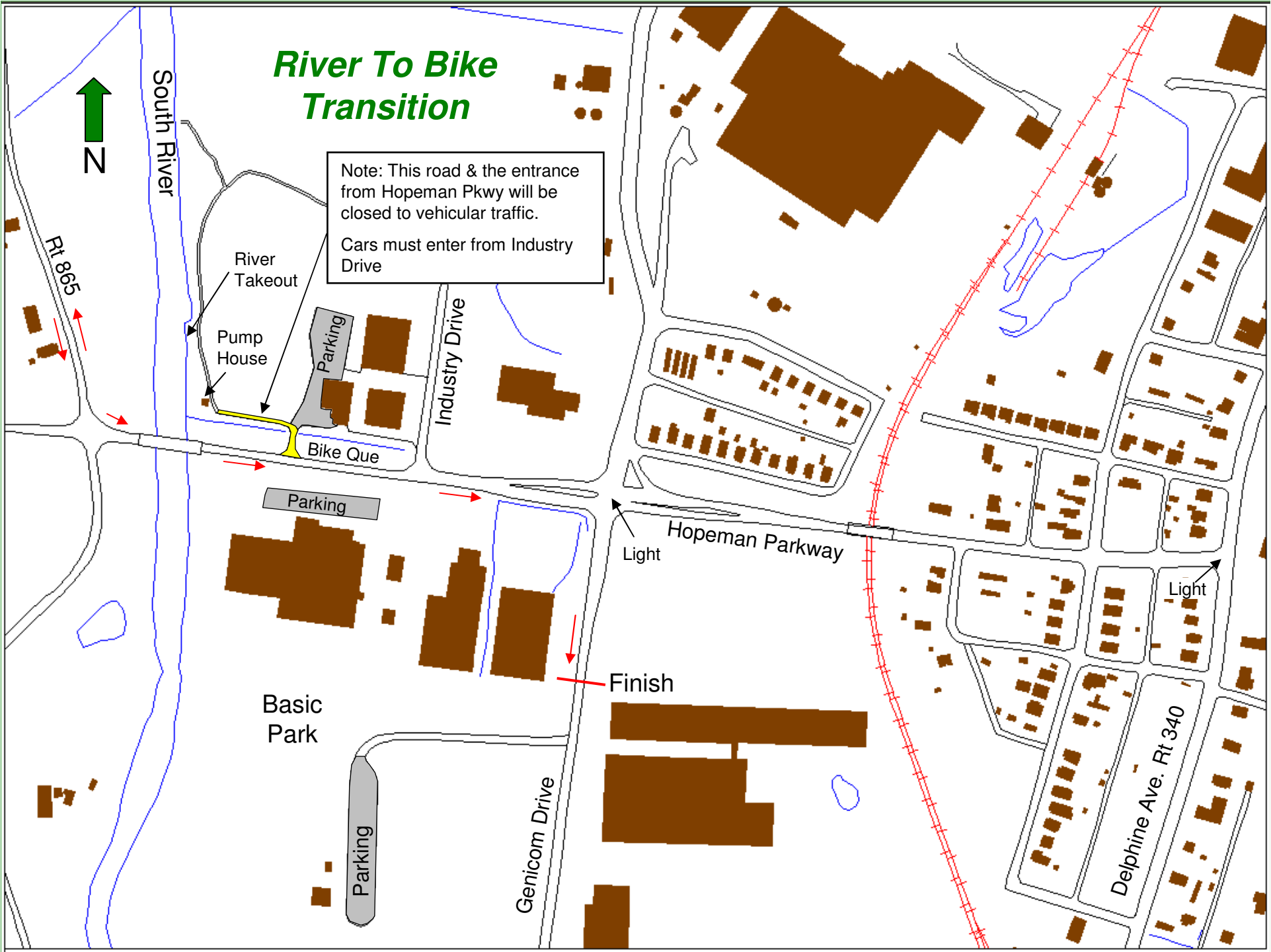


River To Bike Transition



Note: This road & the entrance from Hopeman Pkwy will be closed to vehicular traffic.
Cars must enter from Industry Drive



Rt 895

South River

River Takeout

Pump House

Parking

Industry Drive

Bike Que

Parking

Basic Park

Parking

Genicom Drive

Hopeman Parkway

Light

Finish

Delphine Ave. Rt 340

Light